

PHOTOMETRIC TEST REPORT

DECOR PRO ROUND FIXED -
TEXTURED WHITE - 4002707

astro

DECOR PRO ROUND FIXED - TEXTURED

astro

LIGHT EFFICIENCY:

75 Lumen/Watt

LIGHT QUALITY:

CRI: 94.7

COLOR TEMPERATURE:

2728 K

OUTPUT: 885 lm

PEAK: 3277 cd

POWER: 11.7 W

PF: 0.95



Tracking number: [n/a](#)

Product name:

Decor Pro Round Fixed - Textured White - 4002707

Item number:

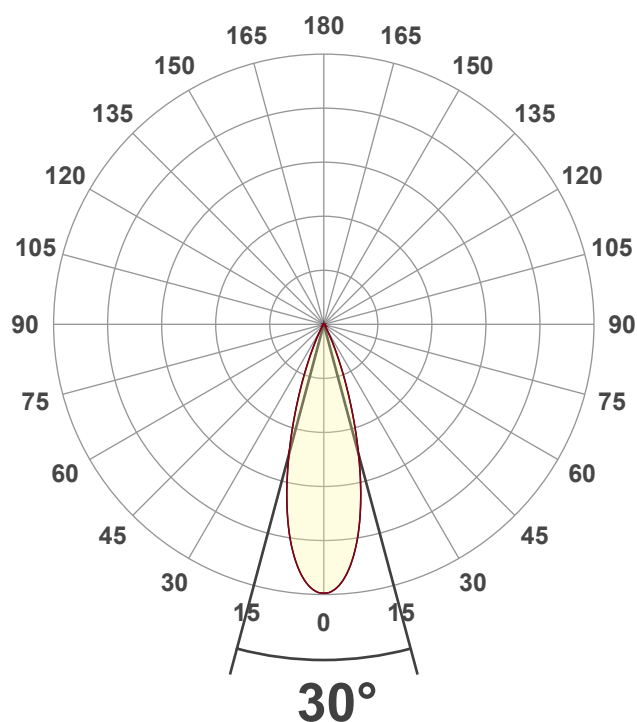
DRF-TW-HQ27G1-30G1-X-D1

Date and time:

31/01/2025 09:38:13

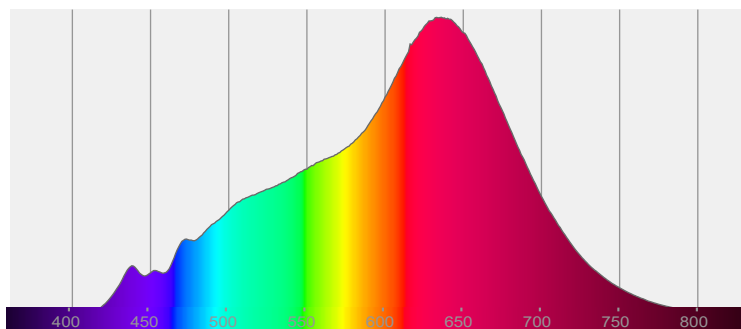
Description:

IP20 LED Downlight

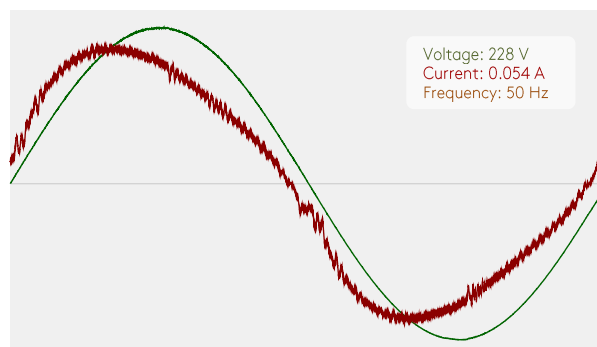


CIE 1931
x: 0.458
y: 0.410

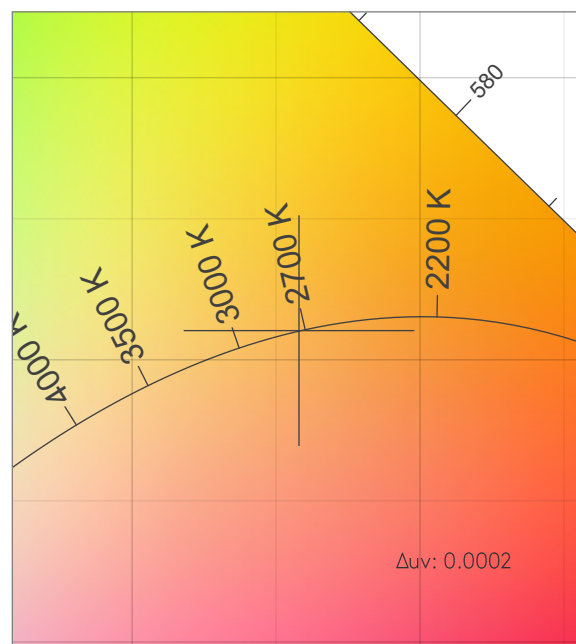
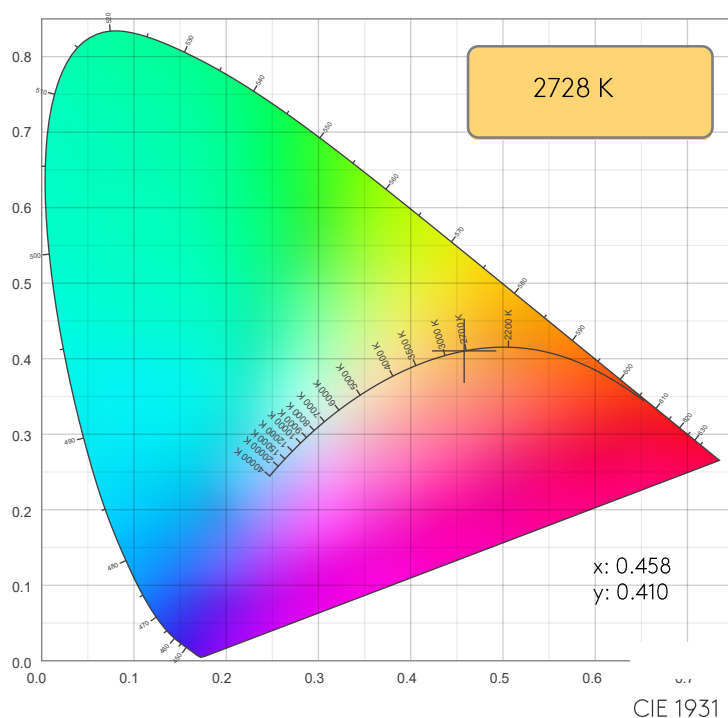
SPECTRA



POWER



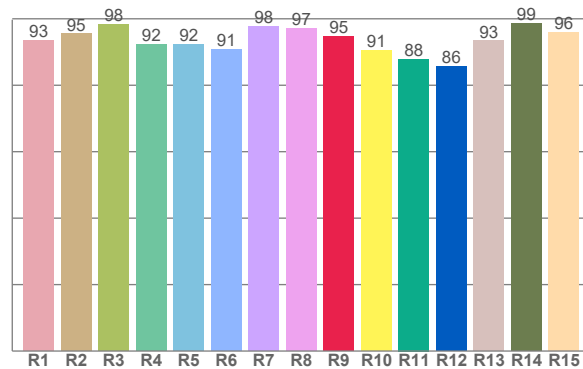
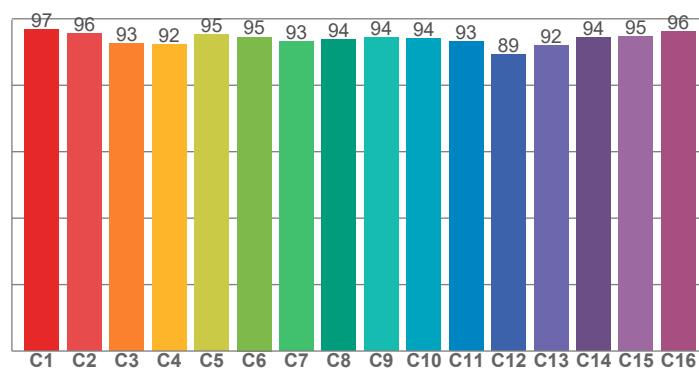
COLOR DETAILS



CIE 1931 ZOOM

TM30: 94.1

CRI: 94.7 (R1-R8)



CRI R values, only R1-R8 are used to calculate final CRI value

R1	R2	R3	R4	R5	R6	R7	R8	R9	R10	R11	R12	R13	R14	R15
93.4	95.5	98.3	92.4	92.4	90.9	97.8	97.2	94.8	90.6	87.9	85.6	93.4	98.6	96.0

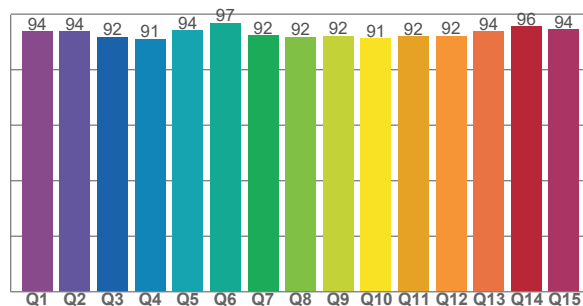
TM30 C values, 16 binned values out of total of 99 C values

C1	C2	C3	C4	C5	C6	C7	C8	C9	C10	C11	C12	C13	C14	C15	C16
96.7	95.6	92.6	92.4	95.2	94.5	93.2	93.9	94.3	94.0	93.2	89.2	91.8	94.4	94.7	96.3

CQS Q values

Q1	Q2	Q3	Q4	Q5	Q6	Q7	Q8	Q9	Q10	Q11	Q12	Q13	Q14	Q15
93.7	93.8	91.8	91.1	94.1	96.8	92.3	91.7	92.1	91.2	92.0	92.0	93.8	95.5	94.4

CQS: 92.8



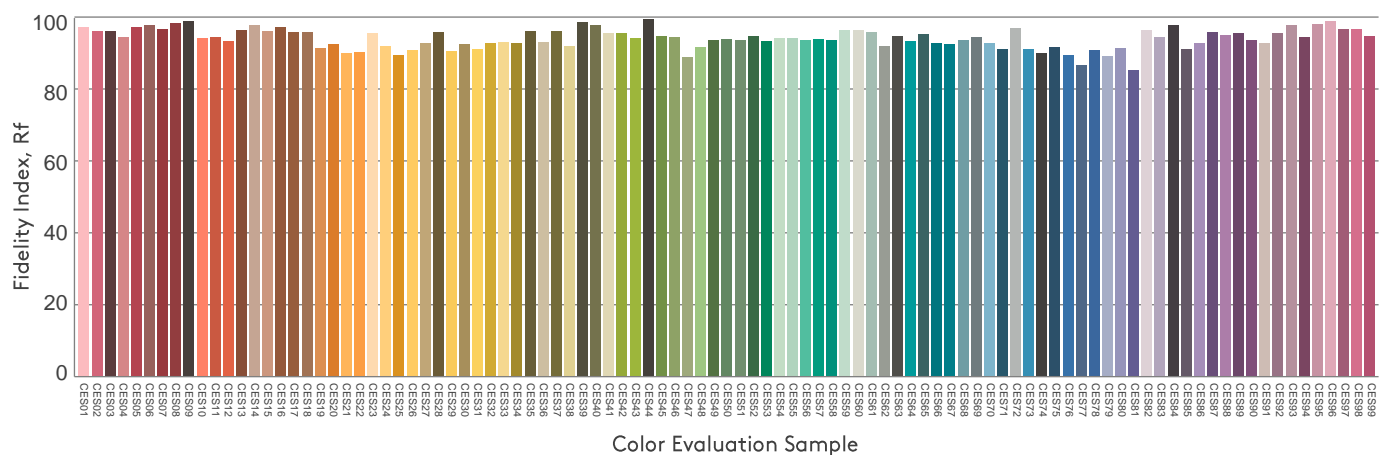
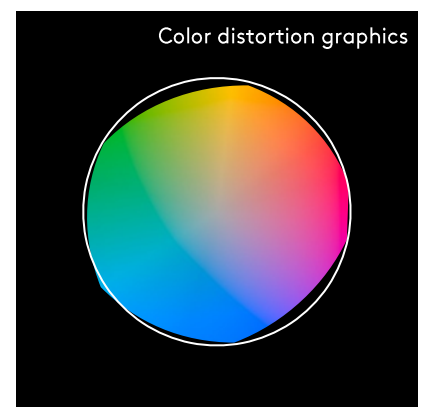
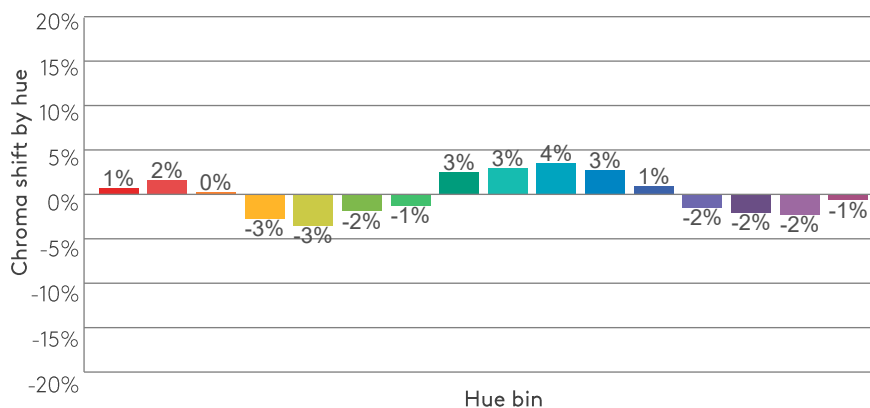
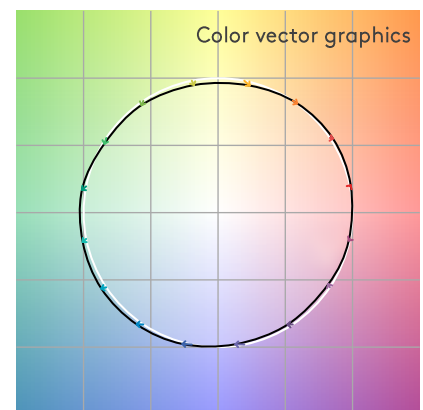
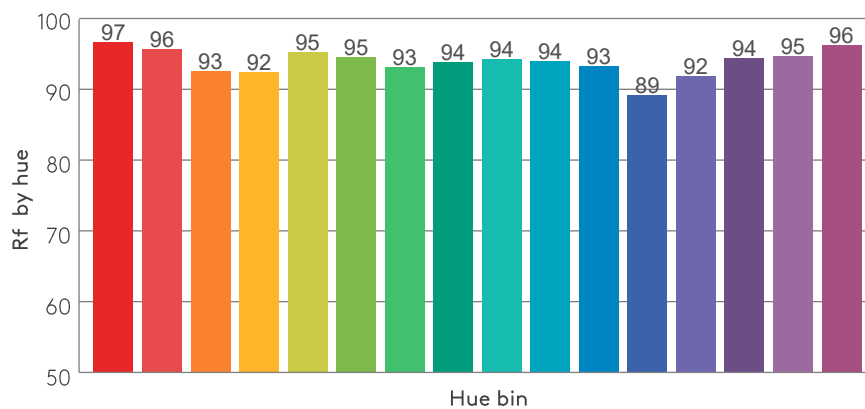
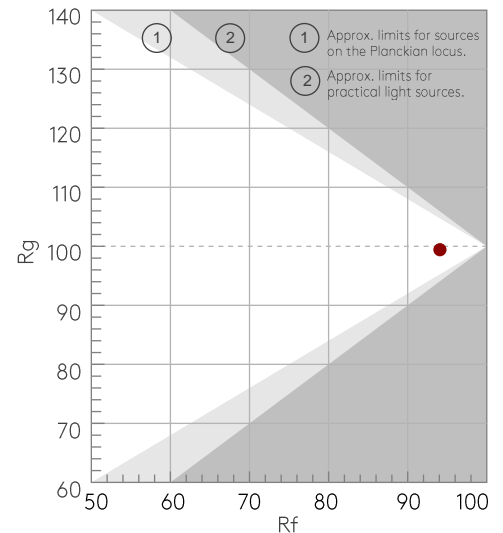
COLOR PARAMETERS

Color temperature	Color rendering index	Red component	Color fidelity	Color gamut	Color quality scale	Color coordinate cie 1931	Color coordinate cie 1931	Color coordinate	Color coordinate	Color deviation from black body
CCT	CRI	CRI R9	TM30 Rf	TM30 Rg	CQS	x	y	u	v	Δuv
2728 K	94.7	94.8	94.1	99.4	92.8	0.458	0.410	0.261	0.351	0.0002

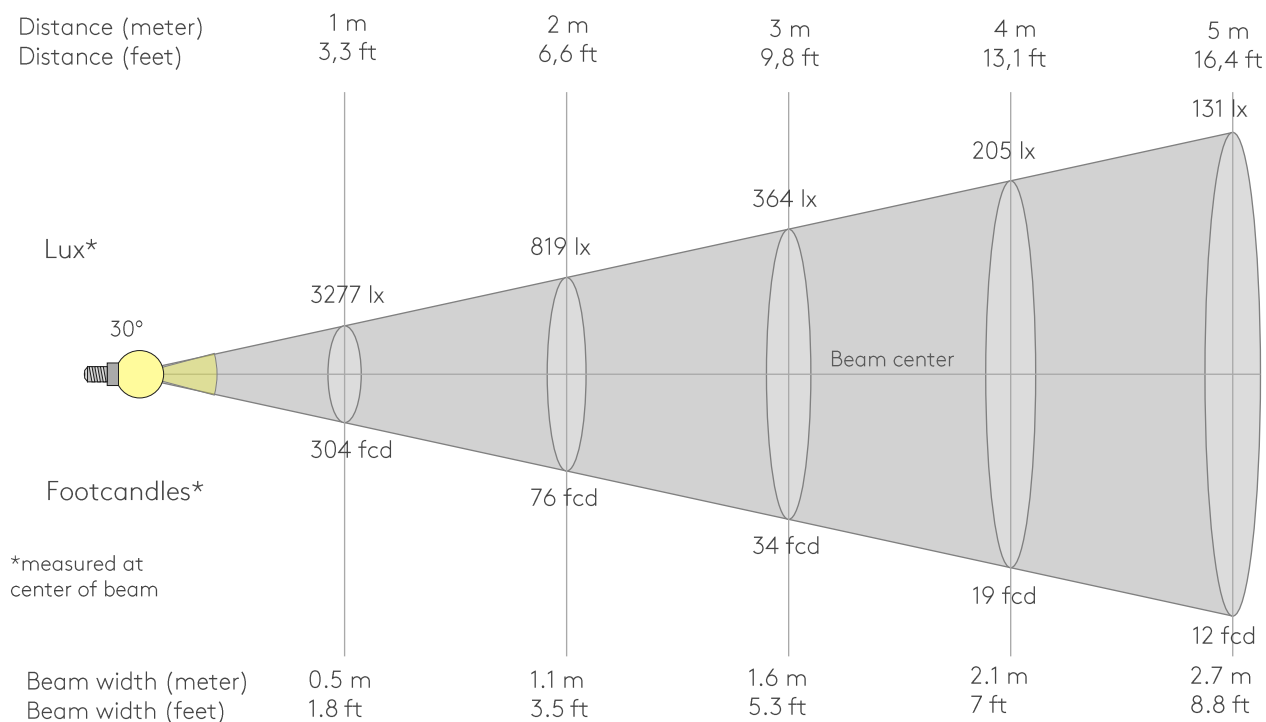
Rf 94.1
Fidelity index Rf

Rg 99.4
Gammut index Rg

Hue Bin	R _f	Graphic shifts (%)	
		Chroma	Hue
1	97	1%	1%
2	96	2%	-2%
3	93	0%	-4%
4	92	-3%	-5%
5	95	-3%	-1%
6	95	-2%	3%
7	93	-1%	4%
8	94	3%	3%
9	94	3%	2%
10	94	4%	-1%
11	93	3%	-4%
12	89	1%	-7%
13	92	-2%	-6%
14	94	-2%	-3%
15	95	-2%	1%
16	96	-1%	-1%



BEAM DETAILS



Beam intensities from 1-20m

1m	2m	3m	4m	5m	6m	7m	8m	9m	10m	11m	12m	13m	14m	15m	16m	17m	18m	19m	20m
3.3ft	6.6ft	9.8ft	13.1ft	16.4ft	19.7ft	23ft	26.2ft	29.5ft	32.8ft	36.1ft	39.4ft	42.7ft	45.9ft	49.2ft	52.5ft	55.8ft	59.1ft	62.3ft	65.6ft
3277lx	819lx	364lx	205lx	131lx	91lx	67lx	51lx	40lx	33lx	27lx	23lx	19lx	17lx	15lx	13lx	11lx	10lx	9lx	8lx
304.4fcd	76.1fcd	33.8fcd	19fcd	12.2fcd	8.5fcd	6.2fcd	4.8fcd	3.8fcd	3fcd	2.5fcd	2.1fcd	1.8fcd	1.6fcd	1.4fcd	1.2fcd	1.1fcd	0.9fcd	0.8fcd	0.8fcd

Intensities in 0° c-plane

0°	2°	4°	6°	8°	10°	12°	14°	16°	18°	20°	22°	24°	26°	28°	30°	32°	34°	36°	38°
3277	3249	3151	2988	2766	2490	2168	1817	1461	1120	816	561	365	227	134	79	48	27	16	10
100%	99%	96%	91%	84%	76%	66%	55%	45%	34%	25%	17%	11%	7%	4%	2%	1%	1%	0%	0%

Intensities in 90° c-plane

0°	2°	4°	6°	8°	10°	12°	14°	16°	18°	20°	22°	24°	26°	28°	30°	32°	34°	36°	38°
3277	3249	3151	2988	2766	2490	2168	1817	1461	1120	816	561	365	227	134	79	48	27	16	10
100%	99%	96%	91%	84%	76%	66%	55%	45%	34%	25%	17%	11%	7%	4%	2%	1%	1%	0%	0%

Intensities in 180° c-plane

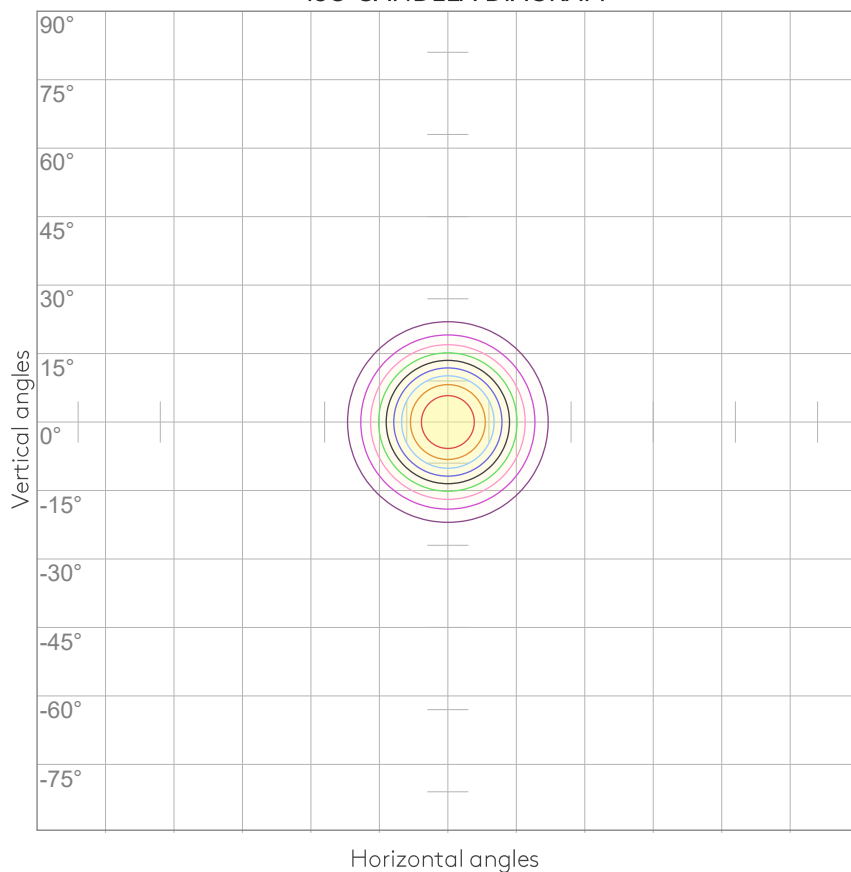
0°	2°	4°	6°	8°	10°	12°	14°	16°	18°	20°	22°	24°	26°	28°	30°	32°	34°	36°	38°
3277	3249	3151	2988	2766	2490	2168	1817	1461	1120	816	561	365	227	134	79	48	27	16	10
100%	99%	96%	91%	84%	76%	66%	55%	45%	34%	25%	17%	11%	7%	4%	2%	1%	1%	0%	0%

Intensities in 270° c-plane

0°	2°	4°	6°	8°	10°	12°	14°	16°	18°	20°	22°	24°	26°	28°	30°	32°	34°	36°	38°
3277	3249	3151	2988	2766	2490	2168	1817	1461	1120	816	561	365	227	134	79	48	27	16	10
100%	99%	96%	91%	84%	76%	66%	55%	45%	34%	25%	17%	11%	7%	4%	2%	1%	1%	0%	0%

Beam angle 50%	Field angle 10%	Cutoff angle 2,5%	Intensity ratio in 120° cone	Intensity ratio in 90° cone
30°	49°	59.7°	99.8%	99.6%

ISO CANDELA DIAGRAM



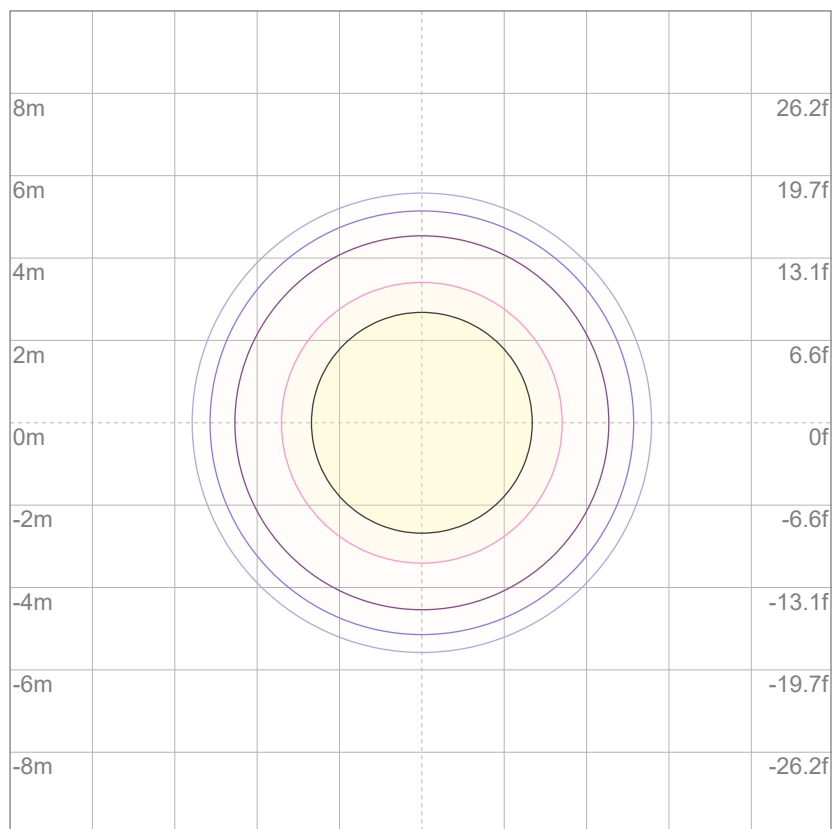
10%	328 cd
20%	655 cd
30%	983 cd
40%	1311 cd
50%	1638 cd
60%	1966 cd
70%	2294 cd
80%	2622 cd
90%	2949 cd

Conditions:

Number of c-planes: 8

Candela at center: 3277 cd

ISO LUX DIAGRAM



Mounting height: 10 meters (33 feet)

3%	0.983 lx
5%	1.64 lx
10%	3.28 lx
30%	9.83 lx
50%	{LUX_10M50} lx

Conditions:

Number of c-planes: 8

Lux at center: 32.8 lx

Lux distribution on a surface
when lamp is mounted at 10
meters from the surface.

UGR

GLARE EVALUATION ACCORDING TO UGR

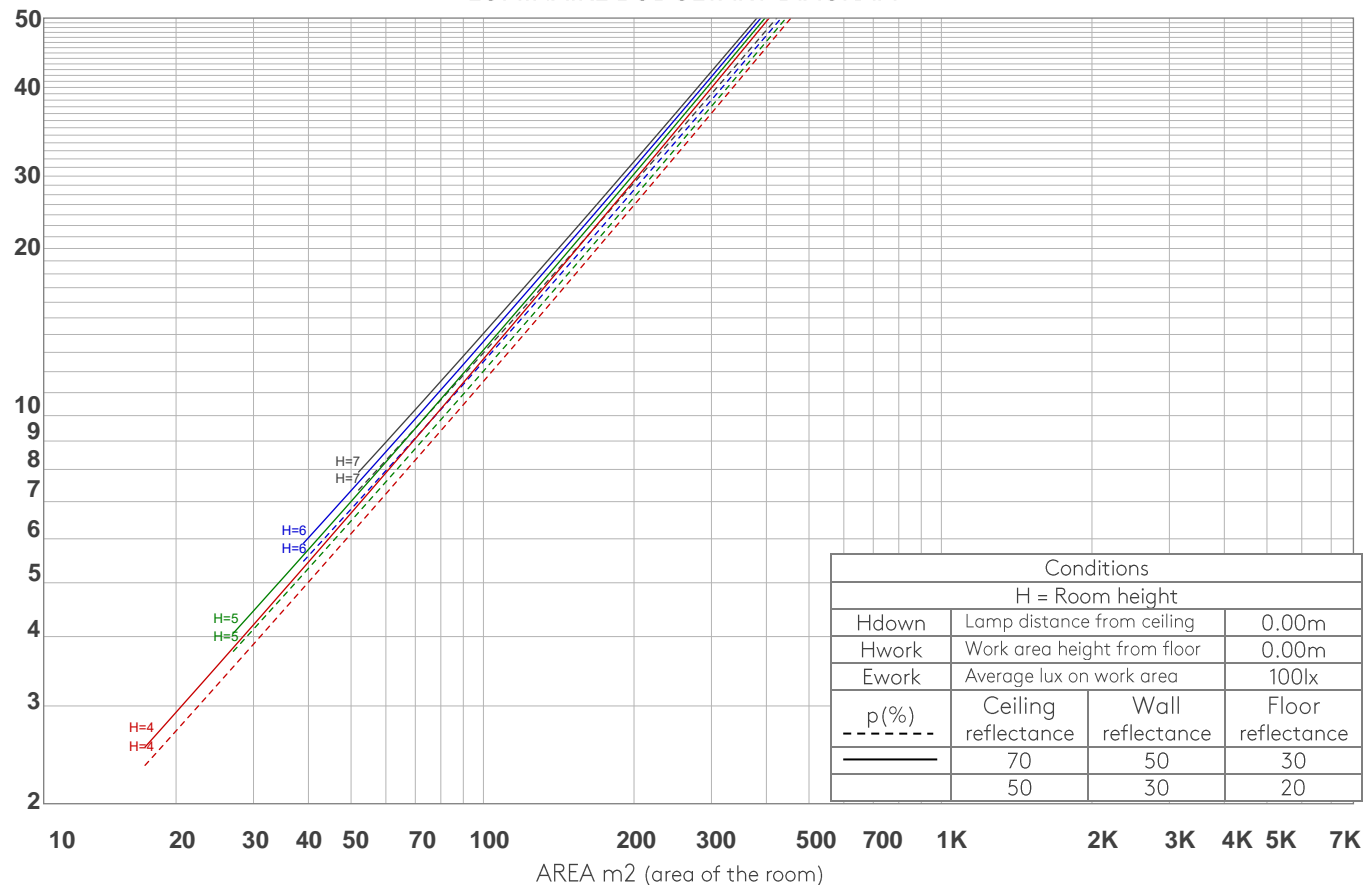
p Ceiling		70	70	50	50	30	70	70	50	50	30
p Walls		50	30	50	30	30	50	30	50	30	30
p Floor		20	20	20	20	20	20	20	20	20	20
Room size X Y		Viewing direction at right angles to lamp axis					Viewing direction parallel to lamp axis				
2H	2H	6.6	7.0	6.7	7.2	7.4	6.6	7.0	6.7	7.2	7.4
	3H	6.3	6.8	6.6	7.0	7.2	6.3	6.8	6.6	7.0	7.2
	4H	6.2	6.8	6.6	7.0	7.2	6.2	6.8	6.6	7.0	7.2
	6H	6.2	6.6	6.5	6.9	7.3	6.2	6.6	6.5	6.9	7.3
	8H	6.2	6.6	6.5	6.9	7.3	6.2	6.6	6.5	6.9	7.3
	12H	6.1	6.5	6.4	6.9	7.3	6.1	6.5	6.4	6.9	7.3
4H	2H	6.2	6.8	6.6	7.0	7.2	6.2	6.8	6.6	7.0	7.2
	3H	6.1	6.5	6.4	6.9	7.3	6.1	6.5	6.4	6.9	7.3
	4H	6.0	6.3	6.4	6.8	7.3	6.0	6.3	6.4	6.8	7.3
	6H	5.9	6.3	6.4	6.6	7.0	5.9	6.3	6.4	6.6	7.0
	8H	5.8	6.2	6.3	6.6	6.9	5.8	6.2	6.3	6.6	6.9
	12H	5.8	6.1	6.3	6.5	6.9	5.8	6.1	6.3	6.5	6.9
8H	4H	5.8	6.2	6.3	6.6	6.9	5.8	6.2	6.3	6.6	6.9
	6H	5.7	6.0	6.3	6.5	7.0	5.7	6.0	6.3	6.5	7.0
	8H	5.8	5.9	6.3	6.5	7.1	5.8	5.9	6.3	6.5	7.1
	12H	5.7	5.9	6.3	6.4	7.0	5.7	5.9	6.3	6.4	7.0
12H	4H	5.7	6.1	6.2	6.5	6.9	5.7	6.1	6.2	6.5	6.9
	6H	5.7	5.9	6.3	6.5	7.1	5.7	5.9	6.3	6.5	7.1
	8H	5.7	5.8	6.3	6.3	6.9	5.7	5.8	6.3	6.3	6.9
Variation of the observer position for the luminaire distance S											
S = 1.0H		6.3 / -10.3					6.3 / -10.3				
S = 1.5H		9.0 / -13.1					9.0 / -13.1				
S = 2.0H		10.9 / -14.5					10.9 / -14.5				
Standard table		n/a					n/a				
Correction summand		n/a					n/a				
Corrected glare indices referring to 885 lm total luminous flux											

COEFFICIENTS OF UTILIZATION

Ceiling reflectance	80				70				50			30			10			0
Wall reflectance	70	50	30	10	70	50	30	10	50	30	10	50	30	10	50	30	10	0
Floor reflectance	20	20	20	20	20	20	20	20	20	20	20	20	20	20	20	20	20	0
RCR	(RCR: Room Cavity Ratio) Room Values are expressed as percentage of Lumens delivered to the task surface																	
0	119	119	119	119	116	116	116	116	111	111	111	106	106	106	102	102	102	100
1	115	113	111	109	113	111	109	107	107	105	104	103	102	101	100	99	98	96
2	111	108	105	102	109	106	103	101	103	101	99	100	98	97	97	96	95	93
3	108	103	99	97	106	102	98	96	99	96	94	97	95	93	95	93	91	90
4	104	99	95	92	103	98	94	91	96	93	90	94	91	89	92	90	88	87
5	101	95	91	88	100	94	91	88	93	89	87	91	88	86	90	87	86	84
6	98	92	88	85	97	91	87	84	90	86	84	89	86	83	87	85	83	82
7	95	89	85	82	94	88	84	82	87	84	81	86	83	81	85	82	80	79
8	93	86	82	79	92	86	82	79	85	81	79	84	81	78	83	80	78	77
9	90	83	79	77	89	83	79	76	82	79	76	81	78	76	81	78	76	75
10	88	81	77	74	87	81	77	74	80	76	74	79	76	74	79	76	74	73

LAMPS (number of lamps)

LUMINAIRE BUDGETARY DIAGRAM



ZONAL LUMEN SUMMARY

0°-10°	10°-20°	20°-30°	30°-40°	40°-50°	50°-60°	60°-70°	70°-80°	80°-90°
275 lm	439 lm	148 lm	16.8 lm	3.20 lm	0.941 lm	0.176 lm	0.052 lm	0.058 lm
90°-100°	100°-110°	110°-120°	120°-130°	130°-140°	140°-150°	150°-160°	160°-170°	170°-180°
0.052 lm	0.055 lm	0.054 lm	0.068 lm	0.129 lm	0.303 lm	0.470 lm	0.344 lm	0.083 lm

FLICKER

FLICKER CURVE (COMPLETE SAMPLED)



FLICKER FRAME (FRAME OF ONE FLICKER)



FLICKER FFT (FREQUENCY SCOPE OF FLICKER)



FLICKER RESULTS:

Flicker frequency:	n/a Hz
Flicker index:	n/a
Flicker percentage:	n/a %
SVM: (Visual flicker)	n/a

FLICKER CONDITIONS:

Sample rate:	n/a samples/second
--------------	--------------------